

THE CHARDONNAY



With a stately presence as if presiding over an ancestral estate, The Chardonnay is a two-story manor with luxuries and amenities befitting modern day nobility.

Inside, the eye is immediately drawn to a stunning view of the private courtyard through a disappearing glass wall that can be opened up to provide flowing access from the formal living room and foyer. French doors off of the formal dining room also join the area to create a delightful area to unwind, dine, or entertain guests.

The gallery, with exposed beams on the lofty ceiling, is not just a passageway, but also an expansion of the dining room and outdoor living room when its beautiful French doors are opened up.

The family room is tucked into a cozy corner of the home under a soaring tray ceiling. A large, rounded window in the breakfast nook provides a clear view to the patio and backyard. Family and guests will gather naturally around the enormous kitchen island central to the combined family and kitchen. A wine room can also be added behind stylish smoked glass off of the kitchen.

Plenty of area for seating surrounds the pool and patio, including a recessed seating area that can include a cozy, outdoor, stone fireplace. Every Chardonnay home has an outdoor kitchen and, just inside, a powder room with shower.

A vestibule offers extra privacy to the entry of the private master suite that is tucked into the back corner of house. With tray ceilings throughout the suite, his and hers closets, and a bathroom with private toilet, double sinks, and a garden tub, no luxury is forgotten. Her closet even has a convenient passage to the utility room and kitchen.

The upper floor is effortlessly joined with the rest of the house with an open, winding staircase that finishes with a Juliet balcony that overlooks the outdoor courtyard. There are two separate bathrooms, each with double sinks and full tubs, for the three bedrooms and bonus room. As an option an additional bedroom can be built on.



The Chardonnay A

Sophisticated and straightforward, this façade flaunts clean lines, white stucco, and a hipped roof with gently flared eaves. Light blue shutters and flowered window boxes add cheerful touches. The arched stone entryway welcomes guests with a sense of history, while shuttered French doors create a seamless flow from the indoors out to the courtyard.



The Chardonnay B

Warm-colored stone and rustic wood are the focus in this cozy, French farmhouse. Authentic Old-World touches are everywhere: from traditional wood posts at the entryway, to board-and-batten shutters, to a jetty with exposed timbers that peeks out from the second story. Sunny yellow stucco perfectly complements and brings all of the elements together for a complete French country feel.



The Chardonnay C

A graceful balcony marries two symmetrical front-facing gables, emphasizing the dramatic entryway of this exterior. The stones stacked to build the courtyard wall appear as if they were plucked from a nearby field. The shake-style shingles on the rooftop appear as if they were nailed into place ages ago. A stoic chimney towers above the home, over copper finials, twin cupolas, and brass accented windows.



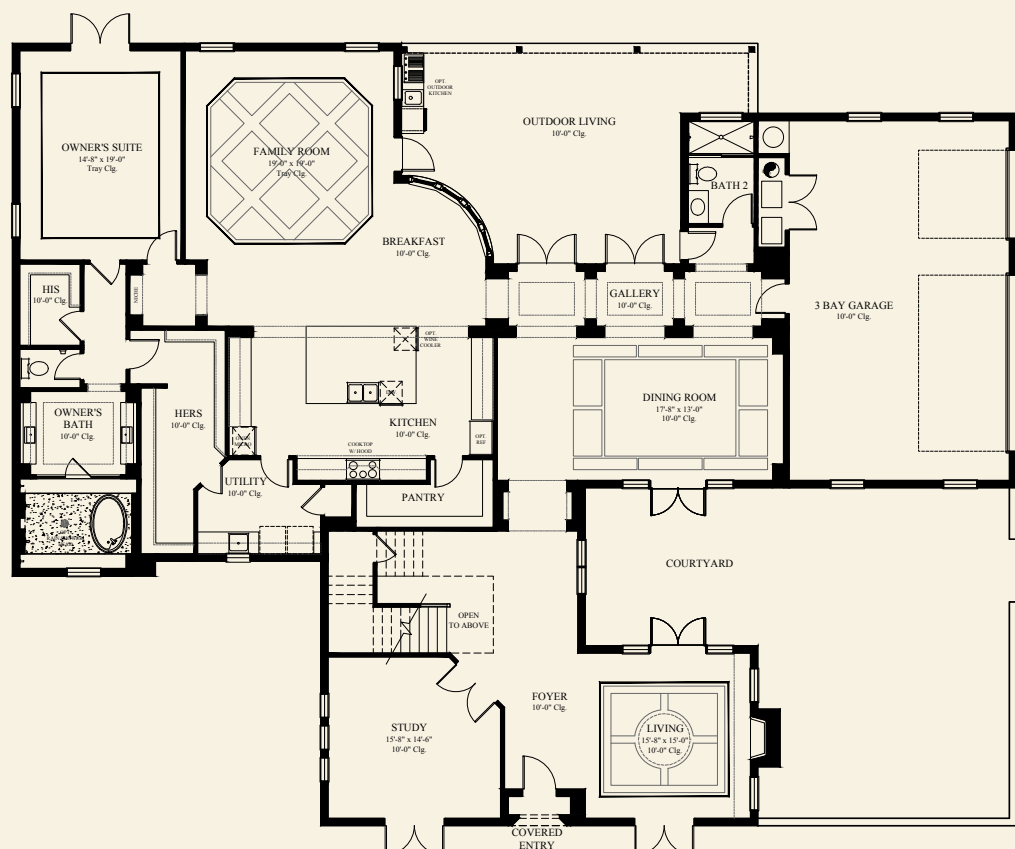
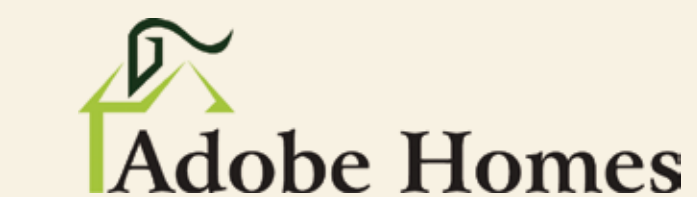
With a covered seating area and deluxe outdoor kitchen, the outdoor living area could be almost considered an additional family room. Timber posts gently define the seating area and brick pavers enhance the clean, geometric lines of the pool. The hot tub's cascading waterfall provides soothing sounds. To complete the scene, a recessed seating area and an outdoor stone fireplace can be added.



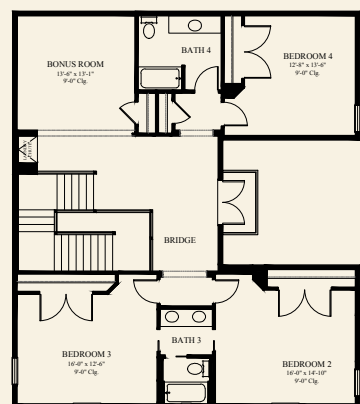
Stone Mantel Fireplace
Not so long ago, the fireplace was considered the heart of the home, a place for warmth and comfort. A stone mantel fireplace with stones carefully put in place as if by old-world masons adds character and completes a home.



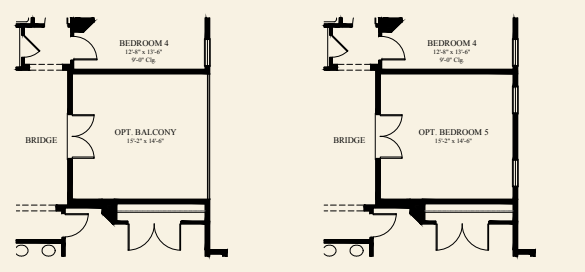
Copper Chimney Caps
Copper chimney caps add style and flare not found in other homes. Historically, chimney pots were used to help draft and keep out rain and debris. Today, the copper chimney caps topping the homes in The French Country Collection paint a scene suggestive of a quaint European village.



Main Floor



Upper Floor



Optional Balcony

+ 245 sq ft

Optional Bedroom 5

+ 245 sq ft



A comfy breakfast nook and a large kitchen island offer plenty of room for dining and entertaining. Mercury glass pendant lights hang beautifully over the island while an optional under counter wine cooler can be added to showcase and provide easy access to your large wine collection. Past the broad archway that defines the kitchen is a large pantry and discreet access to the utility room and the three car garage.



Inside the front entryway, a spacious foyer with beam work and crown molding on the ceiling provides a formal, yet welcoming, invitation to the rest of the home. Deep, graceful, curved archways lead the way to the dining room and combined great room and kitchen. Along the way, a vestibule displays artwork in lighted pedestaled niches.



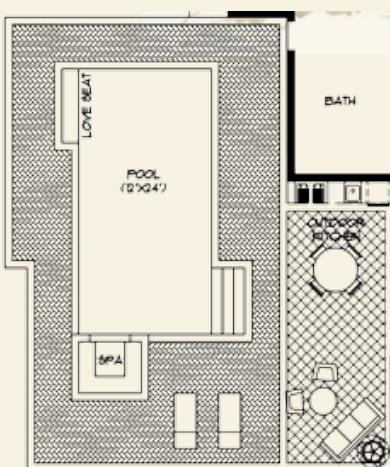
Panoramic windows and French doors send light dancing throughout the room and bouncing off the detailed beam work in the formal dining room. Here, French doors can be opened to the courtyard to create a romantic indoor/outdoor space.



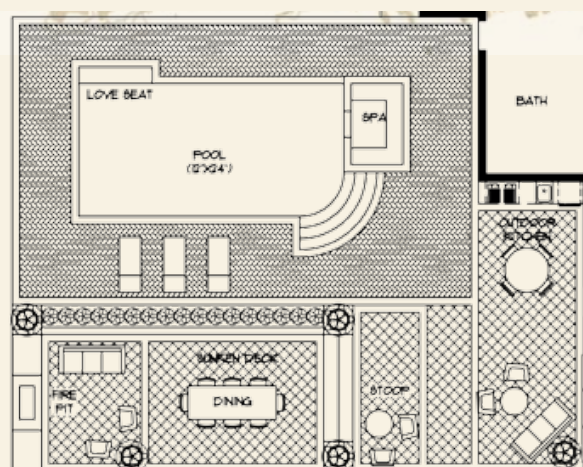
The heart of the home, the open great room and kitchen, is abundant with warmth and character. Exposed beams define the ceiling with paned windows and French doors providing a beautiful view and access to the outdoor living and pool area. A stone mantel fireplace resembling those crafted by old-world masons can add a finishing touch.

On opposite ends of the great room is access to the master suite and the three bedrooms. Entry to the three bedrooms is through a bonus room that is bordered on each side by two full baths. As an option, this area can be customized with the addition of one of three rooms: an additional bonus room, another bedroom, or another bedroom with a bathroom.

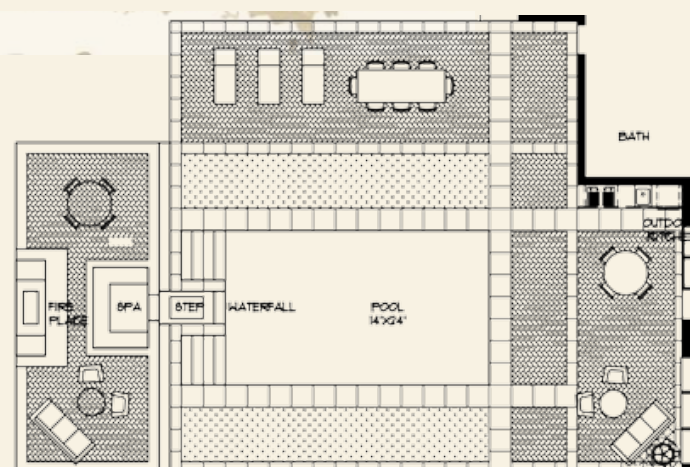
The master suite is a delightful retreat fitted with spacious his and her walk-in closets and a gorgeous tray ceiling. The master bathroom boasts his and her sinks, a private toilet, and a garden tub surrounded by windows on three sides.



Poolside 'A'



Poolside 'B'



Poolside 'C'

Changes and modifications to floor plans, materials and specifications may be made with out notice. Some items pictured or illustrated are optional and are an additional cost. Dimensions are approximate. Photos & illustrations are artist renderings only.